



Order Information

Code No.:	A00121-09
Clone No.:	2H1G11
Lot No.:	00002
Size:	100 μ l
Host:	mouse
Immunogen:	human PBEF1, rec.
Specificity:	hu & rat PBEF1
Formulation:	Liquid form
IgG Type:	IgG
Storage:	-20 °C
Application:	ELISA Western blot IHC

THIS PRODUCT IS FOR
RESEARCH ONLY.
NOT FOR USE IN HUMANS.

Nampt/PBEF1/Visfatin Monoclonal Antibody

Preparation

This antibody was produced from a hybridoma resulting from the fusion of a mouse myeloma with B cells obtained from a mouse immunized with purified, *E. coli*-derived, recombinant human PBEF1.

Formulation

100 μ l of net mice Ascites fluid in liquid form.

Storage

This antibody can also be aliquotted (by 10 μ l per vial) and stored frozen at -20° C to -70° C in a **manual defrost freezer** for six months without detectable loss of activity. **Avoid repeated freeze-thaw cycles.**

Specificity

This antibody has been selected for its ability to recognize human PBEF1 in direct ELISAs and western blots as well as immunohistochemistry. It has crossreactivity with rat PBEF1 in these formats. But it does not show any crossreactivity with rat adiponectin globular domain, mouse FGF-21, human Omentin 1, RBP-4, Leptin, Adiponectin, Resistin, Insulin, TNF- α , IL-6, Chemerin, FABP4 as well as vaspin.

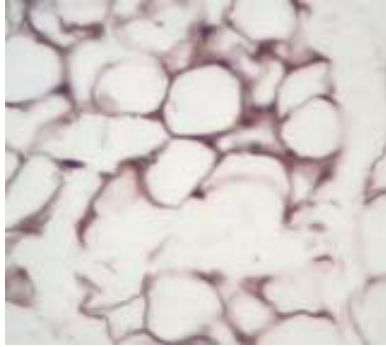
Applications

Direct ELISA - This antibody can be used at 1:5000-8000 with the appropriate secondary reagents to detect human and rat Nampt/PBEF1/Visfatin.

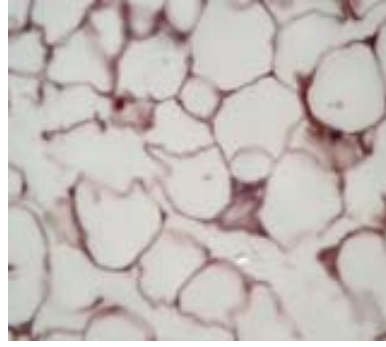
Western blot - This antibody can be used at 1: 500 [0.1 - 0.2 μ l/mL] with the appropriate secondary reagents to detect Visfatin in human and rat serum at 56 KDa . The detection limit for rh Visfatin approximately 10 ng/lane under reducing conditions.

Immunohistochemistry-That Antibody can be used at 1: 200~ 500 with the appropriate secondary antibody to detect Nampe/PBEf1/Visfatin in human as well as rat visceral adipose tissues (ABC).

Optimal dilutions should be determined by each laboratory for each application.



Staining human visceral fat tissue using anti-Visfatin monoclonal antibody at 1: 500



Staining rat visceral fat tissue using anti-Visfatin monoclonal antibody at 1: 500

Immunoblot analysis of human serum PBEF1/Visfatin by human PBEF1 Monoclonal Antibody

